

INOGAM body

ASK FOR THE BEST

THE CHALLENGE

Transport under controlled temperatures requires a body with very good insulating properties. Over and above the mechanical properties and compliance with the cold chain, a guarantee of controlled operating costs and high residual value, the refrigerated bodies must contribute to creating significant savings in fuel consumption and aging of the refrigeration unit.



THE CHEREAU SOLUTION

With more than 500 interior and exterior equipment and accessory options, the **INOGAM** refrigerated body developed by CHEREAU offers an infinite range of combinations. The **INOGAM body** is also the guarantee of having a vehicle perfectly suited to your current needs and future changes in your business.

THE CHEREAU ADVANTAGES

- Polyester technology
- Quality of the materials used
- High-performance insulation
- Exclusive assembly limiting thermal bridging
- Solidity and durability
- Ease of maintenance

INOGAM body

Description of the INOGAM body

A non-deformable rear frame



In all stainless steel, the rear frame has a special surface treatment. It is reinforced by a thin threshold that not only makes the body more rigid but also invulnerable to forklift truck damage.

Invulnerable floors



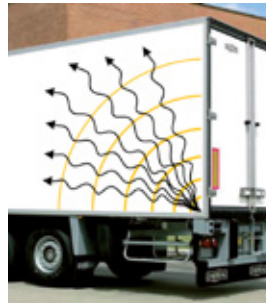
Across the entire width of the rear area, a steel envelope protects the floor structure. A flexible rubber joint breaks the thermal bridge between the body floor and the rear frame threshold. The floors are made of a single piece assembly of insulation, special wood, resins and plywood.

Millimetre tolerance assembly



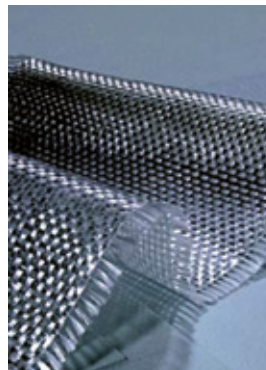
The form of the **INOGAM body** components (floor, roof, side walls and front face), their mounting procedure and the final assembly guarantee very high mechanical strength as well as sealing and the absence of thermal bridges. Particular care is paid to the front face, which supports the weight of the refrigeration unit and the shocks from palettes when loading; it is manufactured using a process that prevents any risk of failure.

Side walls for any need



Designed using feedback from crash tests, the reinforcement integrated into the entire rear part of the side walls absorbs residual shock waves. The side walls are attached to the frame by vertical screws, which makes the assembly even more rigid. Addition special materials limit deformation of the side walls in the impact zone.

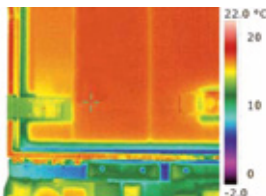
The best polyester materials



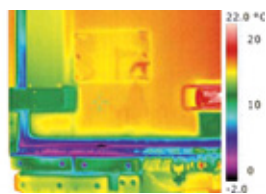
Polyester is the best performing composite material. Solid and strong, having excellent insulating properties, resistant to marking and interior and exterior shocks, easy to maintain and repair, polyester also guarantees a high level of sanitary hygiene. This material is completely compatible with all industrial cleaning products used in the food industry for an optimum sanitary guarantee.

Unequalled insulation performance

Cold leakage



CHEREAU body rear



Brand X body rear

Temperature hold tests (refrigeration unit off) show significantly higher times: at least 15% compared to other equipment on the market. This insulating performance translates into operational savings for the refrigeration unit of around 15%, therefore lower fuel consumption and maintenance.